



**KINGS WATER
ALLIANCE**

KINGS WATER ALLIANCE

WELCOME

**Early Action Plan Kick-Off: Next Steps to Bring Drinking Water
to Residents**

May 25, 2021



**KINGS WATER
ALLIANCE**

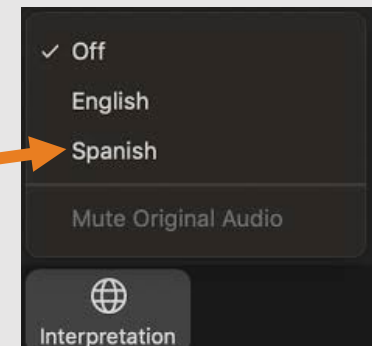
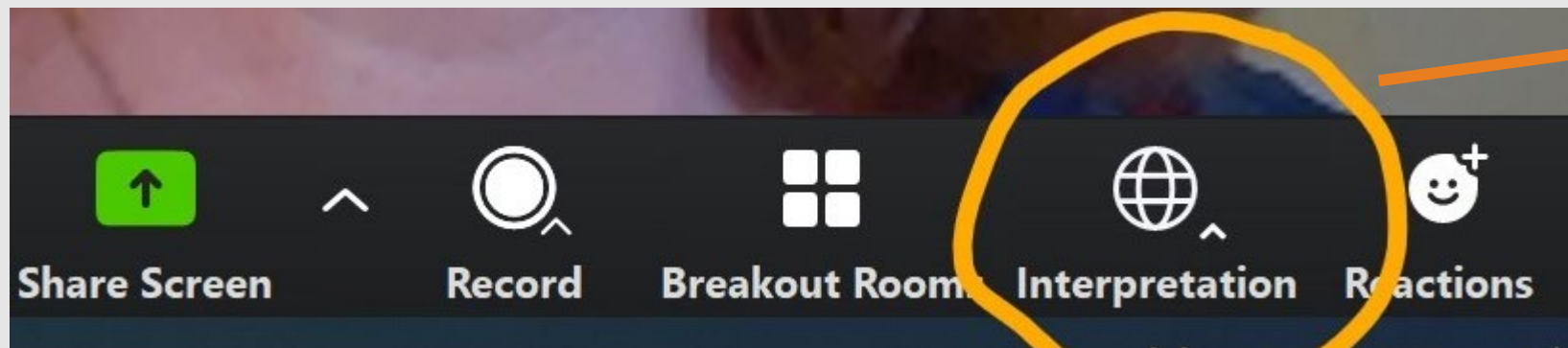
ZOOM WEBINAR DETAILS

Rebecca Quist

SPANISH TRANSLATION/TRADUCCIÓN ESPAÑOLA

To listen to the presentation in Spanish, click the globe icon at the bottom of your screen and select Spanish.

Para escuchar la presentación en español, haga clic en el ícono del globo terráqueo en la parte inferior de la pantalla y seleccione Español.



ZOOM WEBINAR DETAILS

- **Video and audio is OFF for participants**
- **Questions & Answers**
 - **Use the Q&A feature to type a question throughout the presentations**
 - **Verbal questions will be taken at the end of the presentations**
- **Technical difficulties**
 - **Use the Chat feature for Zoom technical assistance**

LIVE POLL

WEBINAR AGENDA

- **SESSION 1: Welcome, Who is the Kings Water Alliance?**
- **SESSION 2: Early Action Plan overview, purpose, status**
- **SESSION 3: Next steps for residents**
- **SESSION 4: Stakeholder call-to-action**
- **Q&A**



**KINGS WATER
ALLIANCE**

SESSION 1 WELCOME WHO IS THE KWA?

Charlotte Gallock

INTRODUCTIONS

- **Kings Water Alliance**

- Charlotte Gallock, KRCD
- Debra Dunn, KRCD

- **External Affairs**

- Cristel Tufenkjian, KRCD
- Rebecca Quist, KRCD

- **Support**

- Jose Soto, KRCD

WHAT IS THE NITRATE CONTROL PROGRAM?

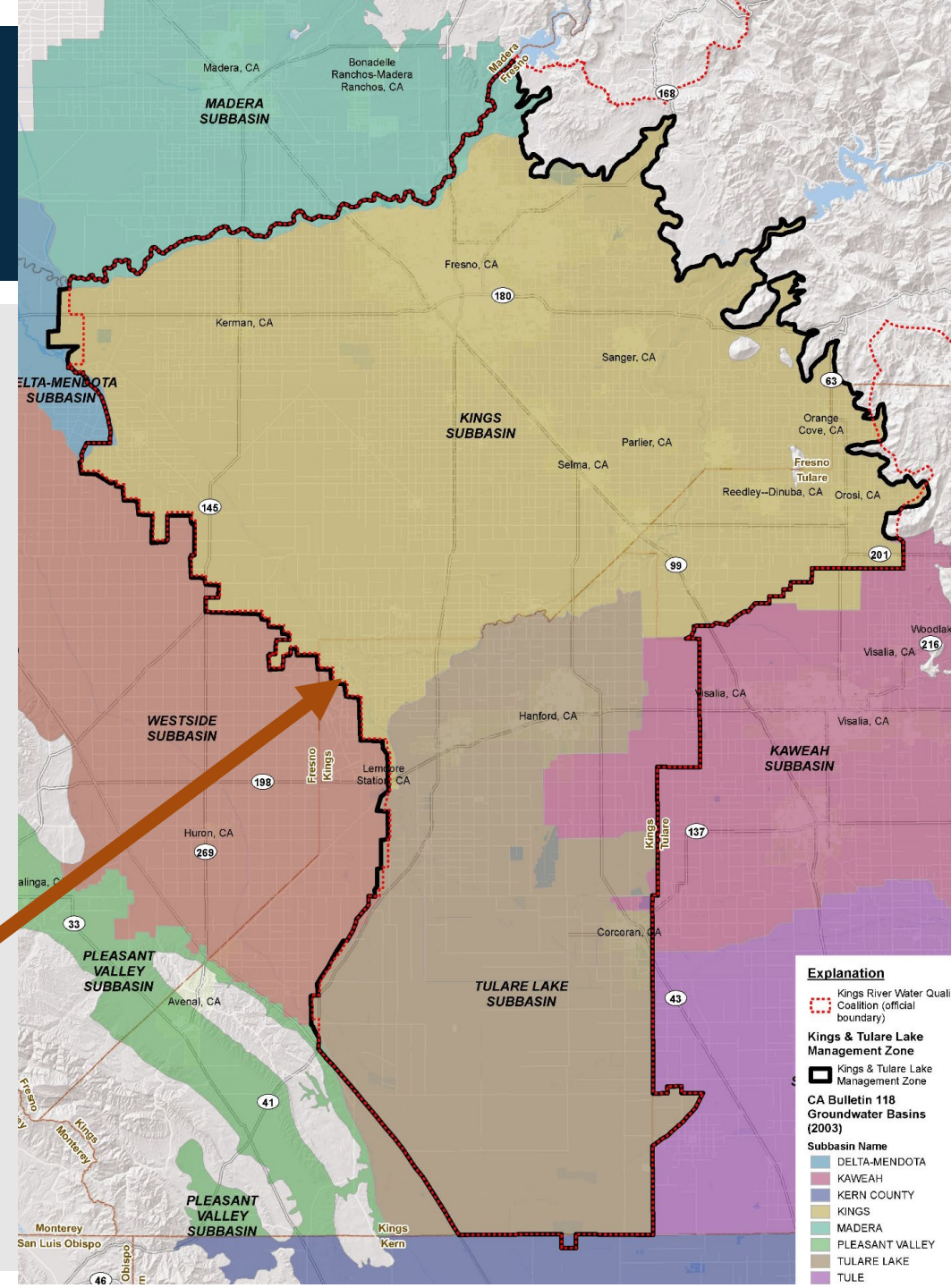
- A new regulation that will help resolve problems with Nitrate in our area. We have three goals:
 1. Provide safe drinking water supplies
 2. Reduce Nitrate impacts to water supplies
 3. Restore groundwater quality, where reasonable, feasible, and practicable
- First step: Stakeholders formed the

Kings Water Alliance Management Zone

Nitrate Control Program Info:

<https://www.cvsalinity.org/nitrate-control-program.html>

Kings Water Alliance Interactive Map: <https://arcg.is/1nXD9e0>



WHAT DOES THE KINGS WATER ALLIANCE MANAGEMENT ZONE DO?

- Find out where nitrate has impacted groundwater and identify residents.
- Collaborate with stakeholders to determine appropriate water solutions and address nitrate issues.
- Prepare and submit required regulatory documents.
- Develop short-term and long-term drinking water solutions



KINGS WATER ALLIANCE MANAGEMENT ZONE PRELIMINARY MANAGEMENT ZONE PROPOSAL

PREPARED FOR

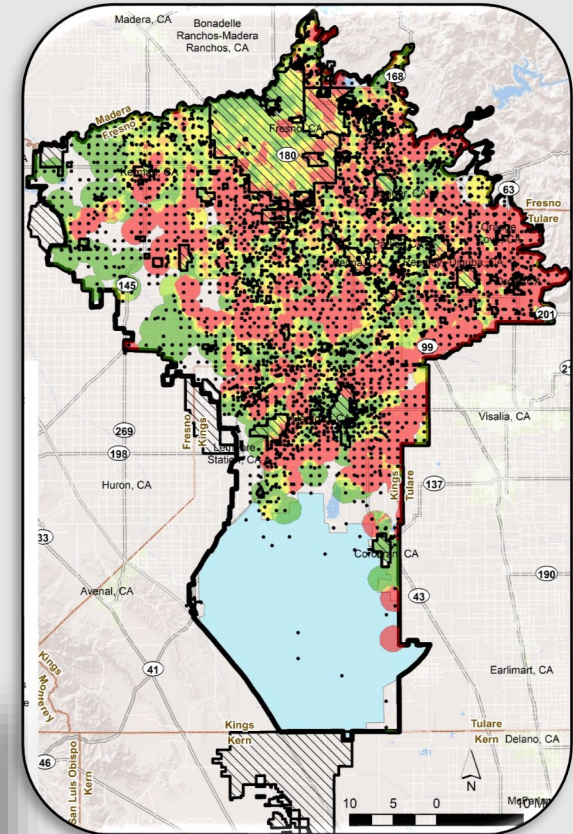
KINGS WATER ALLIANCE

KINGS WATER ALLIANCE MANAGEMENT ZONE EARLY ACTION PLAN

Attachment F

PREPARED FOR

KINGS WATER ALLIANCE



WHAT IS A MANAGEMENT ZONE AND HOW CAN I BE INVOLVED?

- **The Kings Water Alliance Management Zone will:**
 - Bring safe drinking water to your community, where needed.
 - Work together and share the cost of Nitrate Management.
 - Identify solutions tailored to the Kings/Tulare Lake area.
- **You can be involved too!**
 - Nitrate dischargers like Growers, Dairies, Wastewater treatment operators, Wineries, and Food Processors are already getting involved.
 - We need your input too – direct input from residents about water solutions.





**KINGS WATER
ALLIANCE**

SESSION 2 EARLY ACTION PLAN OVERVIEW, PURPOSE, STATUS

Debra Dunn

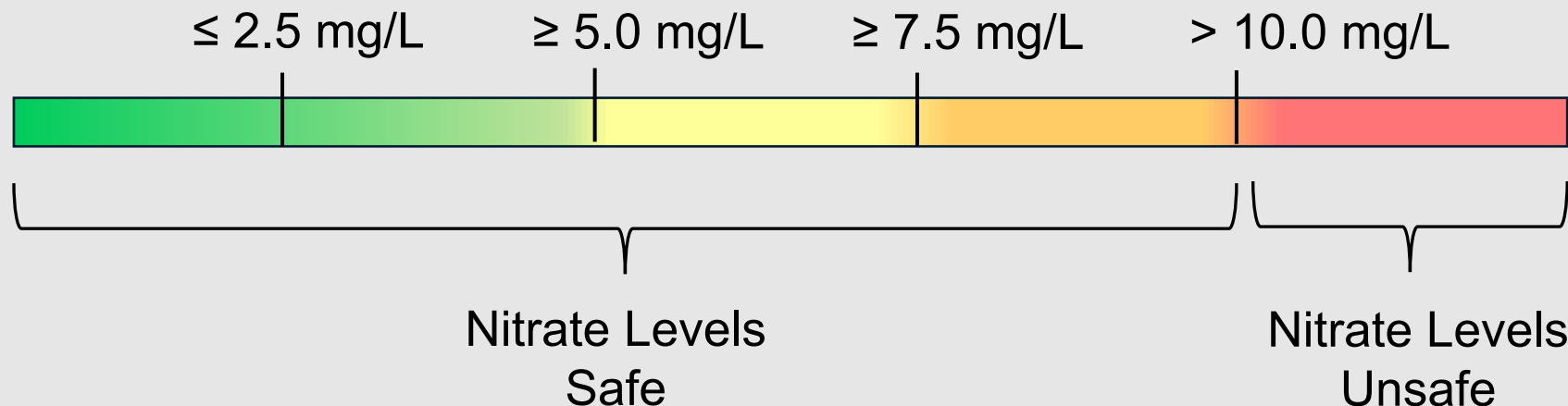
SESSION 2 TOPICS

- **What is the Early Action Plan?**
- **How do I know what the nitrate level is in the well at my home?**
- **How can I receive bottled water?**
- **What options are currently available to obtain safe drinking water?**

WHAT IS THE EARLY ACTION PLAN?

- A plan to provide access to safe drinking water for those who are dependent on groundwater from wells that exceed the nitrate safe drinking water standard
- Available:

www.kingswateralliance.org/eap



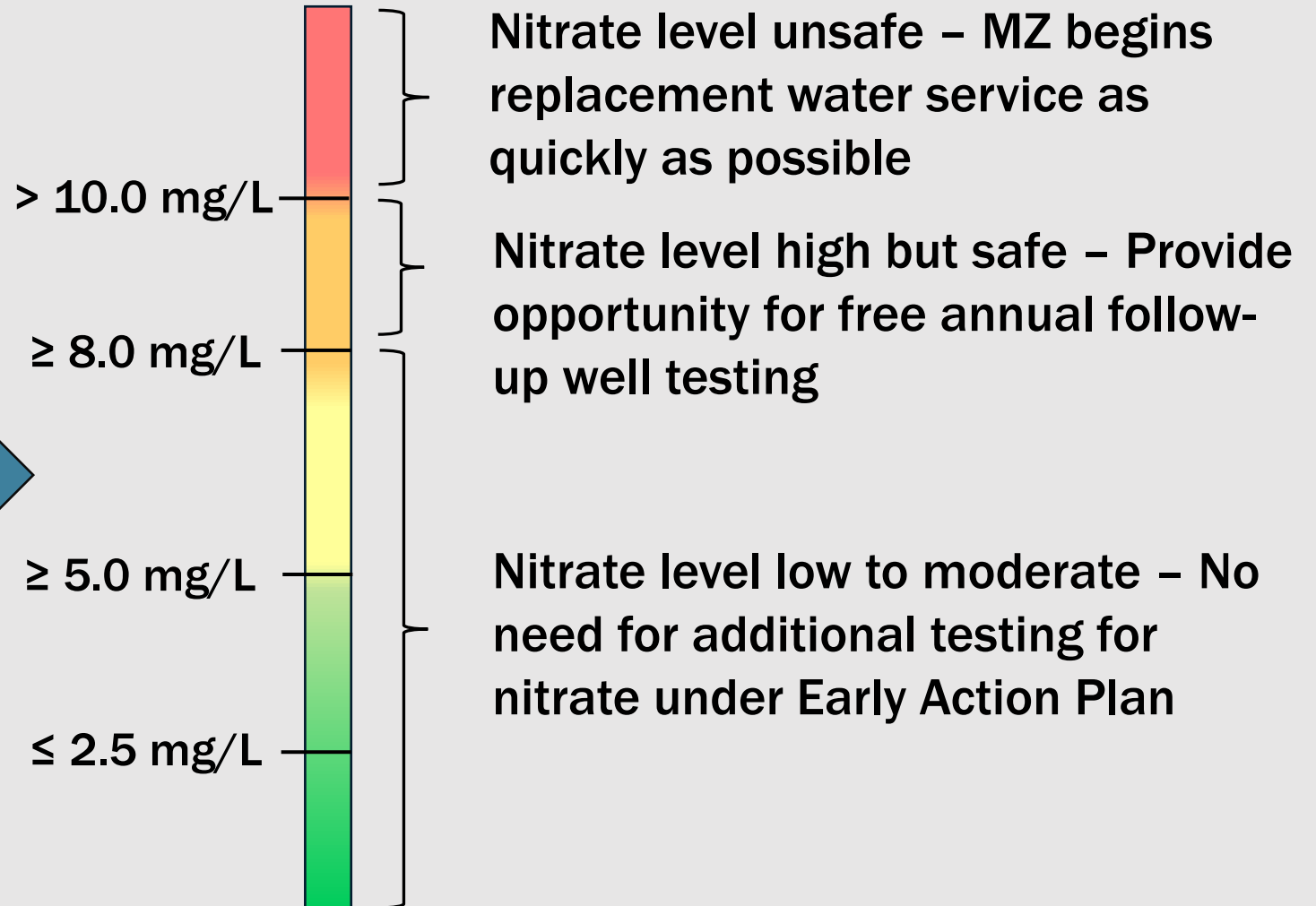
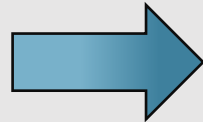
EARLY ACTION PLAN PURPOSE

- **Residential Well Testing Program**
 - Initial
 - Follow-up
- **Interim Replacement Water Program**
 - Bottled Water Deliver
 - Water Fill Station

HOW DO I KNOW WHAT THE NITRATE LEVEL IS IN THE WELL AT MY HOME?

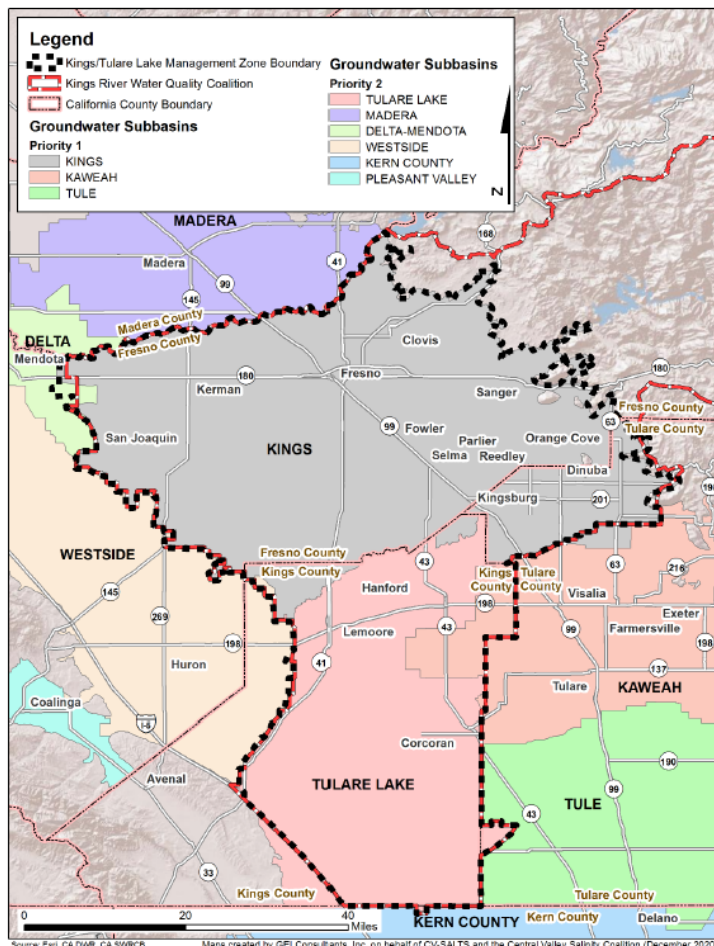
- **Representative from the Management Zone (MZ) will come to your home to test your well water for nitrate at no cost to you**

- **Results will be provided to you**
- **Test result determines next steps**



HOW CAN I RECEIVE FREE BOTTLED WATER?

■ Eligibility:



My home is in the Kings Water Alliance Management Zone Priority 1 Area



My drinking water well has unsafe nitrate levels (> 10 mg/L-N)



I am willing to sign an agreement with the service provider



WHAT OPTIONS ARE AVAILABLE TO OBTAIN SAFE DRINKING WATER?



Home Bottled
Water
Delivery



Visit Local
Water Fill
Station to Fill
Water Bottles



**KINGS WATER
ALLIANCE**

SESSION 3

NEXT STEPS FOR RESIDENTS

Charlotte Gallock and Debra Dunn

NEXT STEPS

- **Safe Drinking Water Form**

- Request free well sampling and/or bottled water
 - <http://kingswateralliance.org/welltest/>

- **Fill Stations**

REQUEST FREE WELL TESTING

Explanation

Upper Zone Well with Average Post-2000 Nitrate

(mg/L as N)

- ≤2.5
- >2.5 - 5.0
- >5.0 - 7.5
- >7.5 - 10.0
- >10.0

△ Upper Zone Control Point Outside MZ

■ MZ Area Delineation (for reporting and displaying purposes)

Ambient Nitrate in the Upper Zone (Post-2000)

(mg/L as N)

- ≤2.5
- >2.5 - 5.0
- >5.0 - 7.5
- >7.5 - 10.0
- >10.0

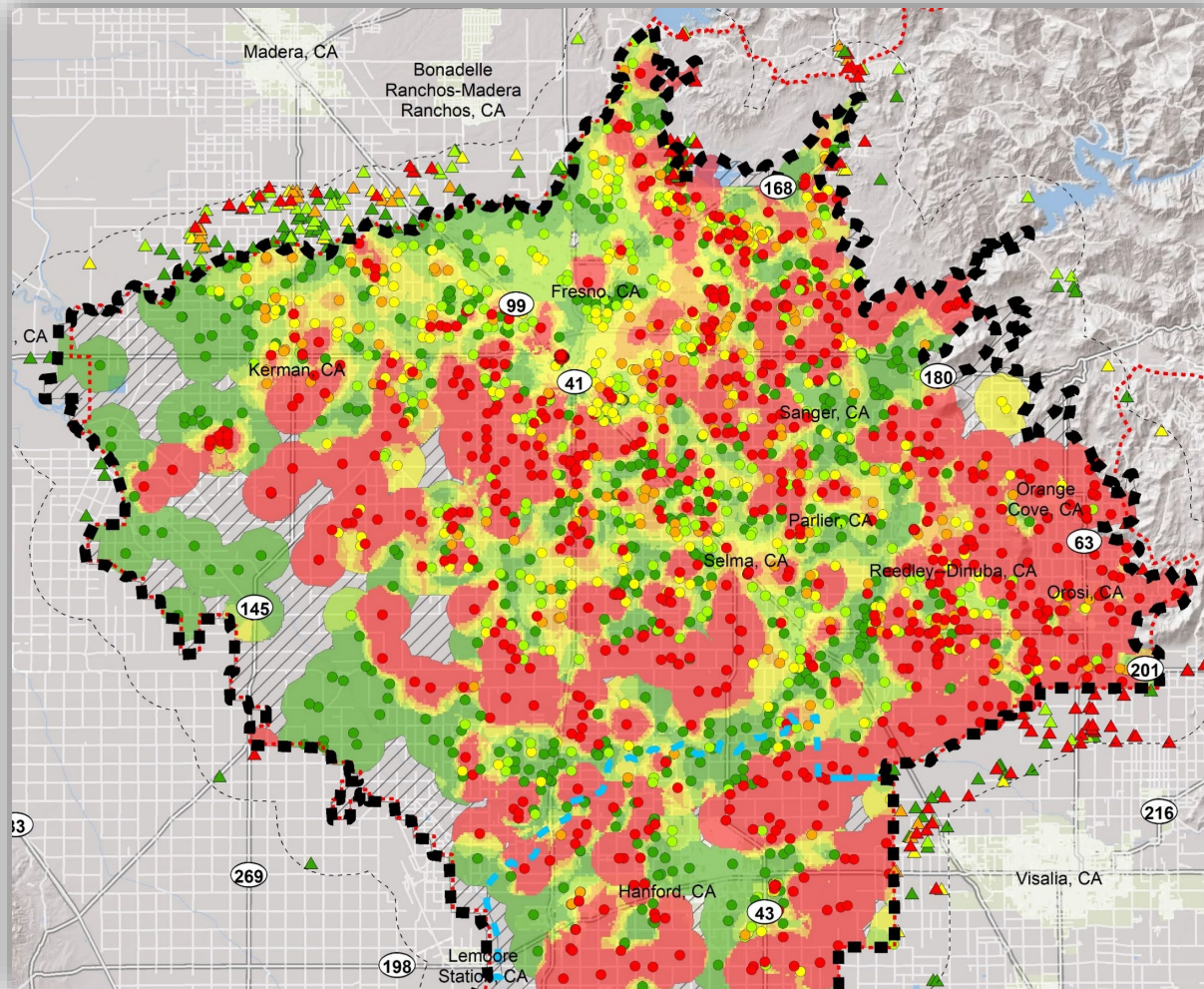
□ Unknown

■ Kings & Tulare Lake Management Zone Boundary

□ 3-mile Buffer for Nitrate Data Collection

□ CA Bulletin 118 Groundwater Basins (2003)

■ De Designation Boundary



Remember: >10 mg/L as N (red areas) means that the water is potentially unsafe to drink, and you may be eligible for free drinking water solutions

REQUEST FREE WELL TESTING

- ❑ Verify you are a resident in the Kings Water Alliance (Priority 1) by using our interactive map at www.kingswateralliance.org/map
- ❑ Fill out our well testing form available at www.kingswateralliance.org/welltest. Contact us if you need a paper form.

DEMO

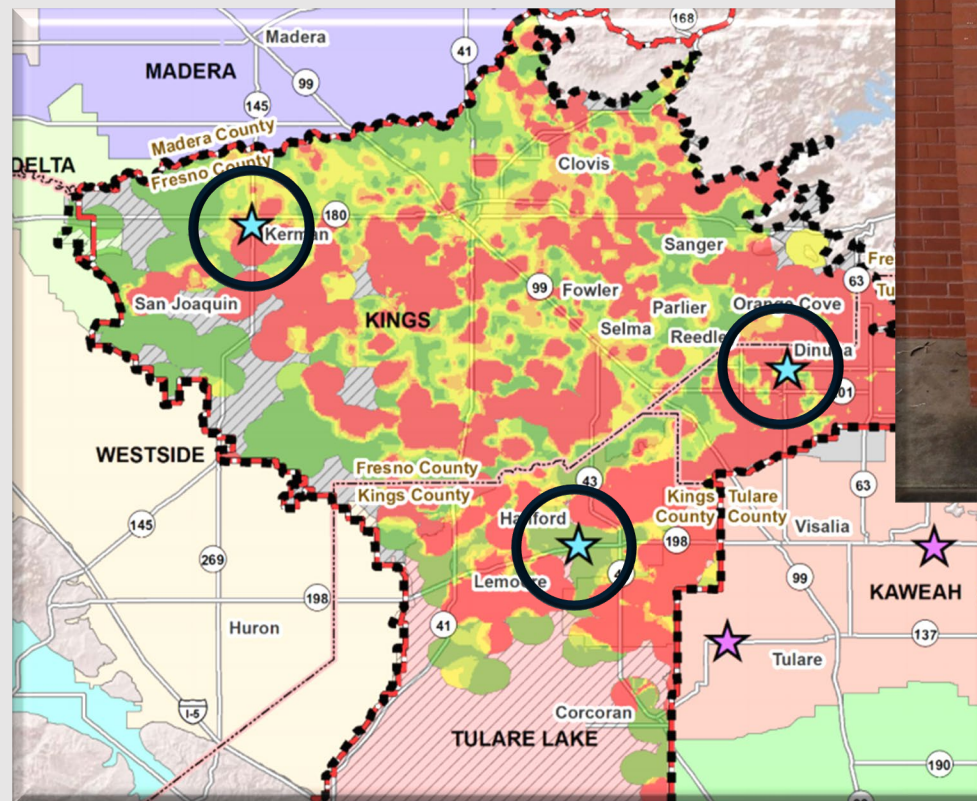
REQUEST FREE WELL TESTING

- ✓ Verify you are a resident in the Kings Water Alliance (Priority 1) by using our interactive map at www.kingswateralliance.org/map
- ✓ Fill out our well testing form available at www.kingswateralliance.org/welltest

Work with us to access free, safe drinking water solutions!

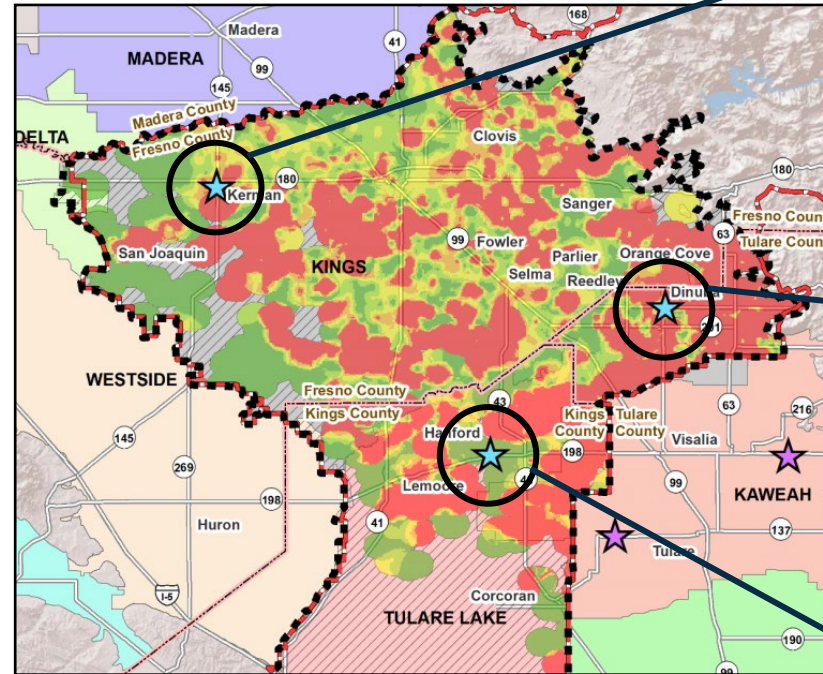
WHAT IS AN ALTERNATIVE TO BOTTLED WATER?

- **Water Fill Stations**
 - Trusted source of safe and free drinking water available to the entire community
 - Three stations are currently open
 - Development of more stations under consideration



FILL STATION LOCATIONS

You can access safe drinking water NOW!



KERMAN

Kerman Community Center
15101 W Kearney Blvd
Kerman, CA 93630

DINUBA

Circle K
517 W El Monte Way
Dinuba, CA 93618

HANFORD

KART Transit Center
504 W. 7th Street
Hanford, CA 93230

FILL STATION BENEFITS

24/7

Unlimited Access

\$0

No Cost to the User



Clean Municipal
Water Supply

For more info: www.kingswateralliance.org/fillstations

LIVE POLL



**KINGS WATER
ALLIANCE**

SESSION 4

STAKEHOLDER CALL-TO-ACTION

Rebecca Quist

TWO OUTREACH EFFORTS



Community Outreach



7.5+ mg/L-N

Targeted Resident Outreach

EVALUATION AND ITERATION

- **Integrated communications that reach people where they are**
- **Internal and stakeholder evaluation built into our outreach program at development and implementation stages**



LIVE POLL

JOIN THE STAKEHOLDER ADVISORY COMMITTEE

- First meeting scheduled for June 10th from 12:00-1:00 PM
- Meets bi-monthly
- You can:
 - Join the Committee! Email us at info@kingwateralliance.org to express interest.
 - Attend meetings as a member of the public. Meeting notices will be on our website and sent via our email list



WE ALL HAVE INFLUENCE: SPREAD THE WORD!



Community Stakeholder

Resident/Domestic Well Owner



~7,000+

WE ALL HAVE INFLUENCE: SPREAD THE WORD!



Community Stakeholder



Resident/Domestic Well Owner



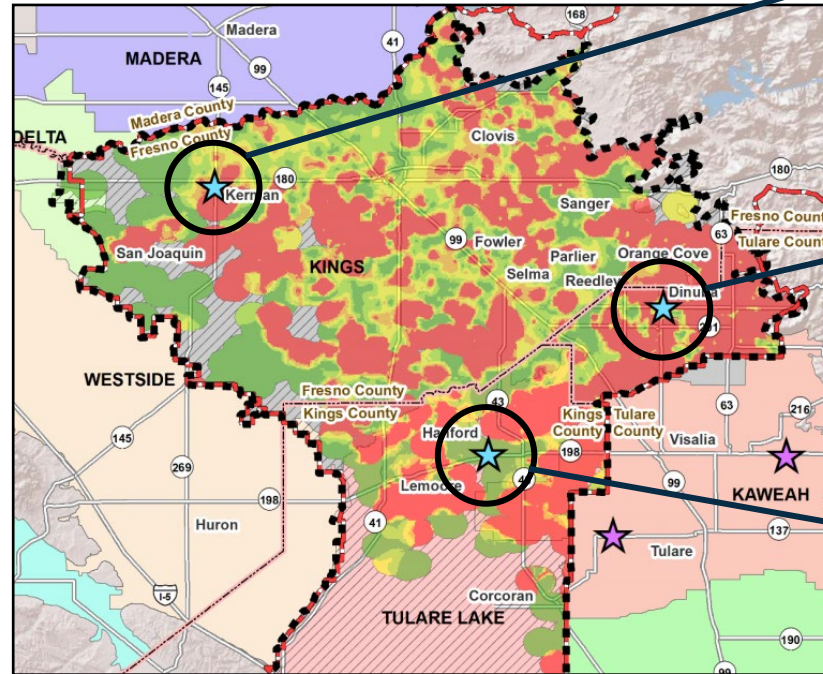
~7,000+

REQUEST FREE WELL TESTING

- ❑ **Verify you are a resident in the Kings Water Alliance (Priority 1) by using our interactive map at www.kingswateralliance.org/map**
- ❑ **Fill out our well testing form available at www.kingswateralliance.org/welltest. Contact us if you need a paper form.**

FILL STATION LOCATIONS

You can access safe drinking water NOW!



KERMAN

15101 W Kearney Blvd
Kerman, CA 93630

DINUBA

517 W El Monte Way
Dinuba, CA 93618

HANFORD

KART Transit Center
504 W. 7th Street
Hanford, CA 93230

For more info: www.kingswateralliance.org/fillstations

FILL STATION BENEFITS

24/7

Unlimited Access

\$0

No Cost to the User



Clean Municipal
Water Supply

For more info: www.kingswateralliance.org/fillstations

STAY ENGAGED



Join our email list for latest updates on drinking water solutions in the Kings Water Alliance.

Meeting notices and program updates will be provided to our email subscribers.

Sign up at www.kingswateralliance.org or by dropping your name and email in the Chatbox!

SESSION 4 WRAP-UP

- **You have a sphere of influence! It will take our whole community to implement this program.**
- **Join or attend the Stakeholder Advisory Committee.**
- **Request free well testing with our form.**
- **Visit a local fill station for safe drinking water, now!**
- **Sign up for email updates.**



**KINGS WATER
ALLIANCE**

QUESTIONS & ANSWERS

CONTACT US

www.kingswateralliance.org

(559) 549-6747

info@kingswateralliance.org



**KINGS WATER
ALLIANCE**

THANK YOU!